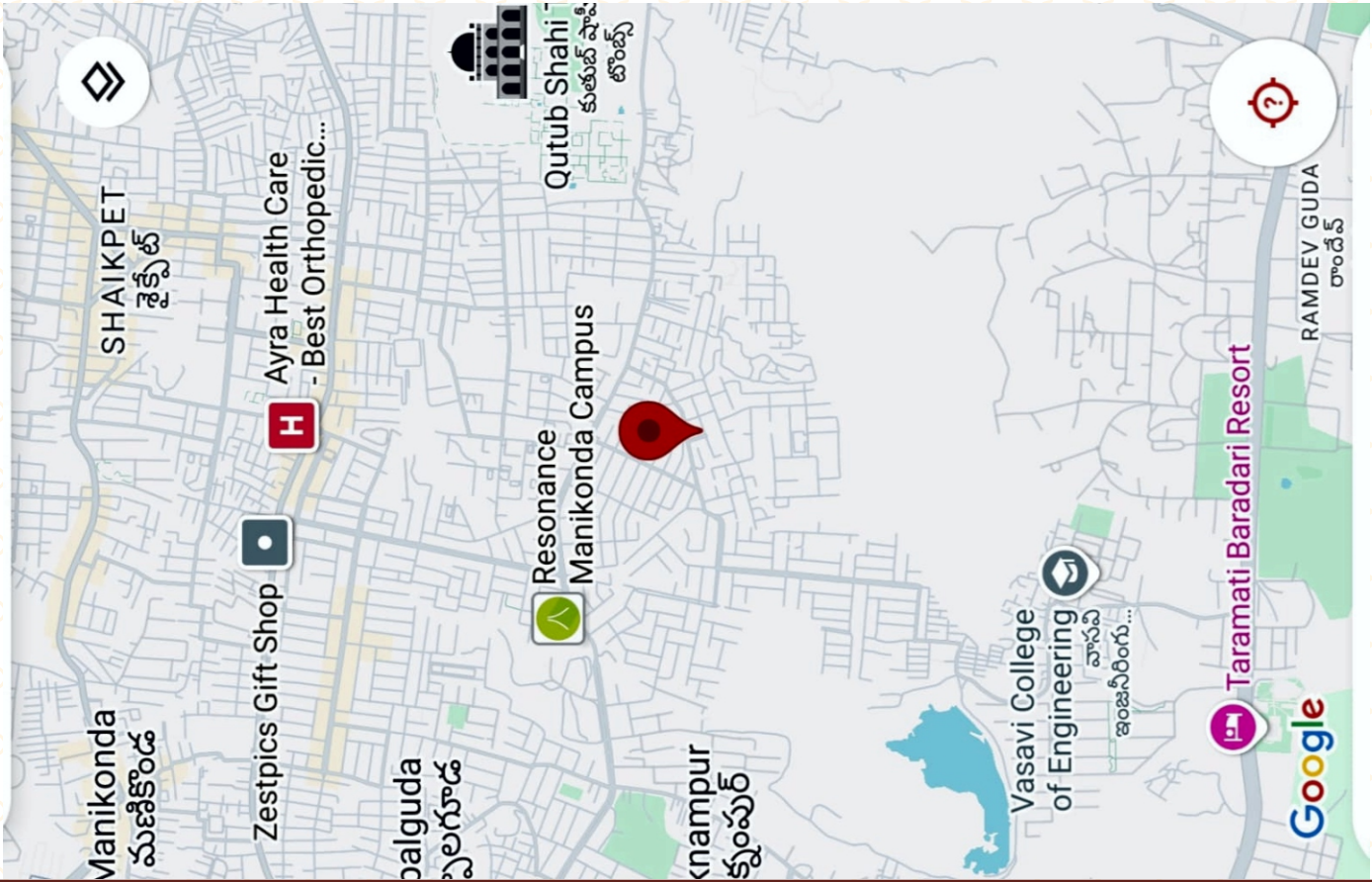


# LOCATION MAP



## LOCATION ADVANTAGE

- \* Reliance Mart
- \* Ratnadeep Super Market
- \* International School
- \* Deccan Park Seven Tomb
- \* Petrol Pump
- \* Bakewell Bakers
- \* HDFC BANK
- \* Airport Bridge - 2.5 km



Mohammed Farooq Hussain [www.patelsinfra.com](http://www.patelsinfra.com)  
# 8-1-398/PM/400/A, Paramount Hills, Shaikpet, Tolichowki,  
Hyderabad - 500 008. Telangana. E : [ukpatelsinfra@gmail.com](mailto:ukpatelsinfra@gmail.com)

**IND 9100090992 | 9542887918 | 8977925606 | UK : 0044 7415 242173**

**SITE ADDRESS**



Plot No - 24 Kohinoor Enclave Colony Alkapur Road - Hyd.

### ARK CONSULTANTS

Consultants & Structural Designer

**Abdul Rahman Khan (Shahid)**

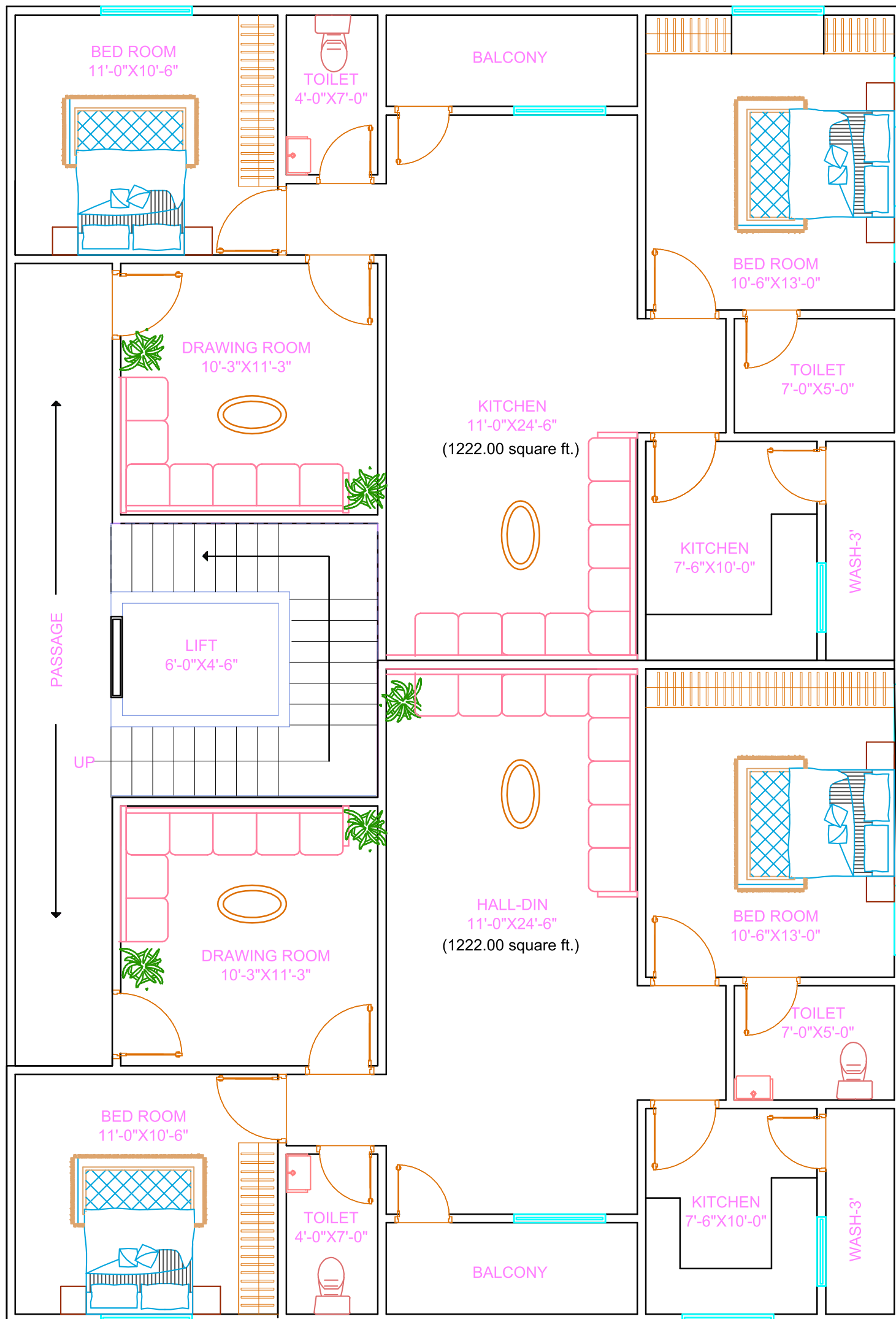
BE (Civil), M.Tech (Str)-MIE  
Cell : +91 9849253009

**PROJECT APPROVED BY : GREATER HYDERABAD MUNICIPAL CORPORATION**

Note : This brochure is only a conceptual presentation of the project and not a legal offering.  
The promoters reserve the right to make changes in plans, specifications and elevation as deemed fit.







TYPICAL FLOOR PLAN

<div>FOUNDATION &amp; STRUCTURE</div> <div>Reinforced concrete cement frame structure concreting with Ultratech/ Birla ready mix</div>	<div>WALLS</div> <div>Table molded high quality light weight red bricks in (Karimnagar) cement mortar light weight Sree Shakthi /AAC</div>	<div>OTHER DOORS &amp; WINDOWS</div> <div>UPVC Windows - 3 Tracks Safety grills to all windows</div>	
<div>WOOD WORK : MAIN DOOR</div> <div>Teak wood frame and teak wood panel shutters for main doors Teak wood frames with molded type shutters for all other doors(make-Masonite) / hardwood doors both sides laminates or brass with S.S. Finish Hardware</div>	<div>FLOORING</div> <div>Vitrified tiles in all rooms (32/32 or 4x2 premium johnson / Kajaria or equavelant Granite in common areas &amp; staircase Parking Tiles in parking area</div>	<div>KITCHEN PLATFORM</div> <div>Granite cooking platform with build in stainless steel sink &amp; tiles downing to ceiling above platform &amp; provision of chimney wherever possible.</div>	
<div>PATEL'S KOHINOOR HEIGHTS</div> <div>by Patels Infra Builder's &amp; Developers</div>			<div>EXTERIOR ELEVATION</div> <div>Combination of Tuffien glass, HPL Sheet, texture with one coat of premier &amp; two coats of wall putty &amp; water proof emulsion</div>
<div>FINISHING</div> <div>Interior - wall putty smooth wall luppum Finish one coat or premier &amp; two coats plastic emulsions. Satin enamel finish for molded door frames matt finish enamel for safety grills. Mclamide machine polish for main door.</div>	<div>WASH BASIN</div> <div>3 No's Wash Basin for 3 BHK Flat</div>	<div>TOILETS</div> <div>Concealed pipe line for hot &amp; cold water (Sudhakar/Ashirwad make) Ceiling height glazed tiles dado shower wall mixture, sink/basin mixture (all fitting in brass of standard make) One IWC &amp; one EWC in each flat (in Jaguar/Cera make)</div>	
<div>ELECTRICALS</div> <div>Concealed multi-stand copper wiring Finolex/Polycab with modular switches sockets of Anchor/Maru make Provision for all required gadgets in each flat invertor wiring in all rooms and inverters &amp; A/C points</div>	<div>WATER SUPPLY</div> <div>Bore Water Facility &amp; Provision for GHMC Water Connection</div>	<div>OTHER</div> <div>Intercom from security desk to each flat 3 phase silent generator with canopy supply to lift &amp; common areas &amp; water pump (make Eicher Kirloskar/Mahindra) Cameras installed in common for security reason</div>	
	<div>LIFT</div> <div>6-Person capacity lift with ARD Controller (Kone/Otis Johnson) Stainless steel</div>		<div>GRILLS</div> <div>M.S. Grills for Windows with Enamel Painting</div>